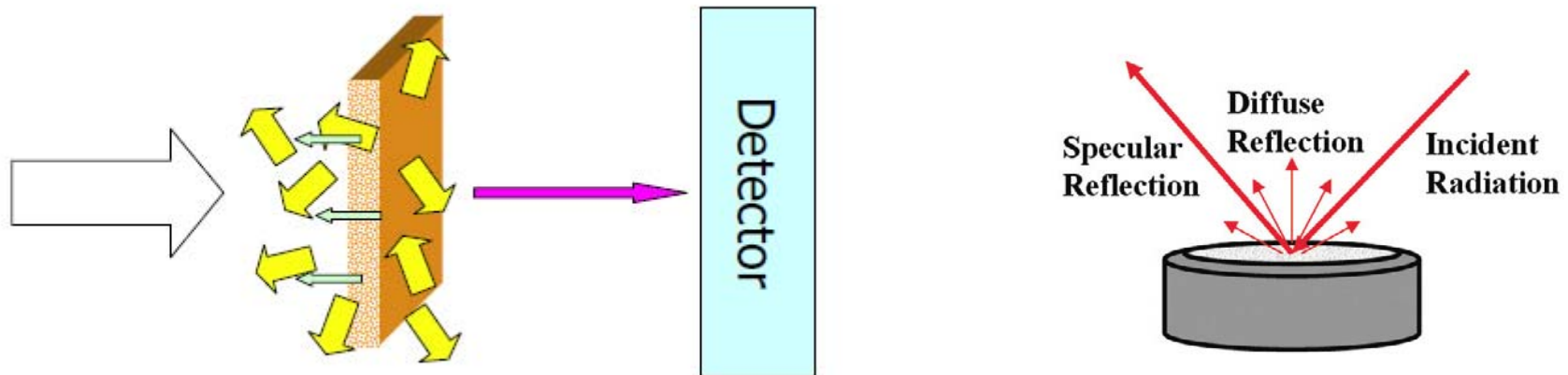


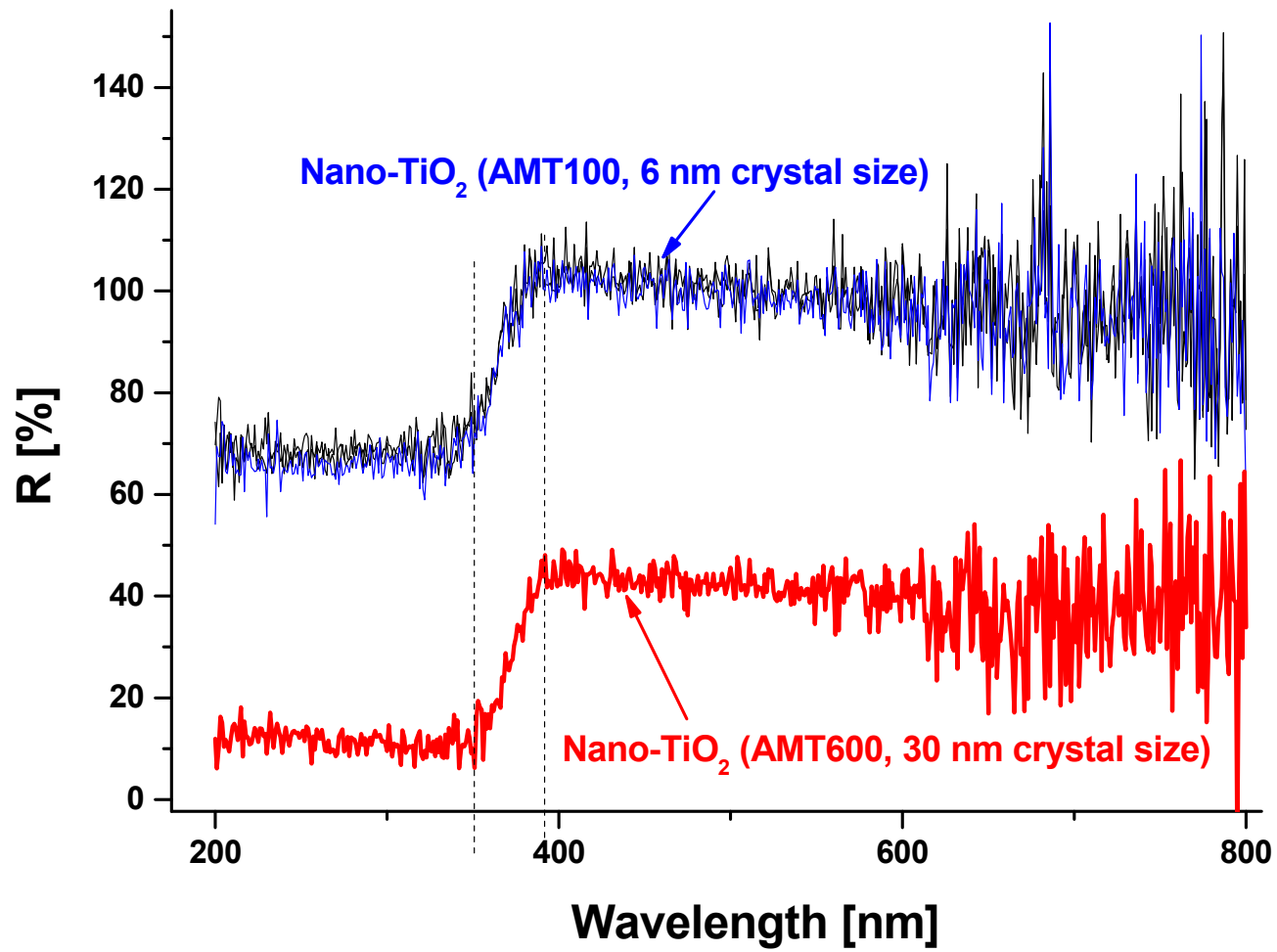
## Diffuse Reflectance Spectroscopy - - reveals macroscopic and microscopic surface properties



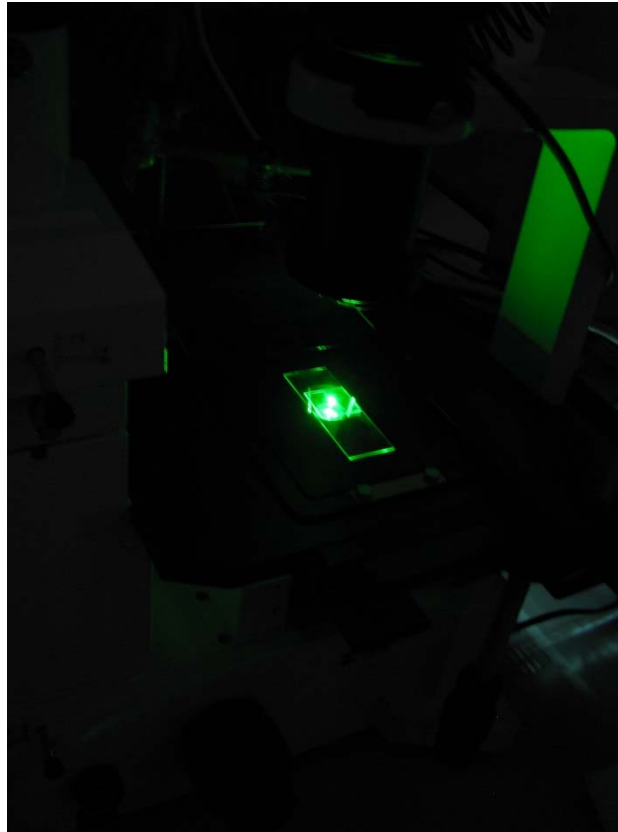
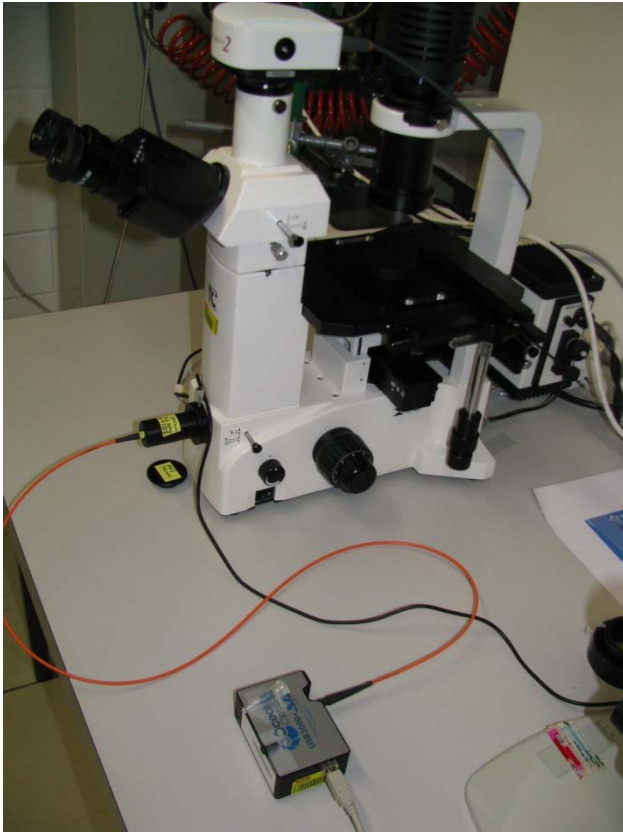
Diffuse reflectance spectroscopy (DRS) is an excellent sampling tool for powdered, ceramics or fine-crystalline materials in the UV-VIS, NIR and mid-IR spectral ranges. It can also be used for analysis of 'intractable' solid samples.

# Diffuse Reflectance Spectroscopy

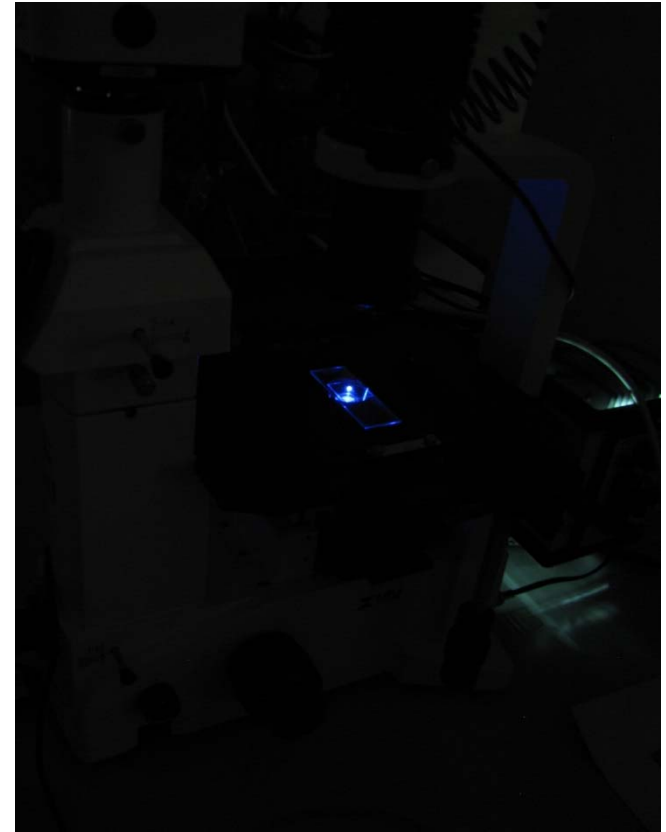
## Thin films of TiO<sub>2</sub> (anatase)



## Optical microscopy and epi-fluorescent microscopy



$$\lambda_{\text{ex}} = 546 \text{ nm}$$



$$\lambda_{\text{ex}} = 470 \text{ nm}$$

# Epi-fluorescence microscopy of transparent and non-transparent materials

